



CARING FOR THE CAREGIVER

At the MGH FTD Unit, we understand that every patient we meet has a unique support system and exists within that network, family or friendship.

We know that having caregivers who are informed and supported can make all the difference in patient care and have witnessed the power of tenacious advocates.

We are consistently awed by the strength, perseverance and love that caregivers share every day.

Strong partnerships with the Association for Frontotemporal Degeneration, the Boston-area FTD Support Group and the Alzheimer's Association ensure that we will refer caregivers for support, information, and a new community where they will feel respected and welcomed.

LOCATIONS

MGH FTD UNIT MAIN CAMPUS

Our patient care clinic is located at the MGH Main Campus in the Wang Ambulatory Care Center. Some of our research studies are conducted in the clinic. We also work closely with the Division of Nuclear Medicine, located on floor 2 in the White building, where most of our clinical PET scans and some of our research PET scans are performed.

15 Parkman St.
WACC 835
Boston, MA 02114
617-726-1728

MGH FTD UNIT CHARLESTOWN RESEARCH CENTER

The majority of our research is performed at our facility in the Charlestown Navy Yard, including MRI and PET scans performed in the Martinos Center for Biomedical Imaging facilities.

149 13th St.
Suite 2691
Charlestown, MA 02129
617-726-5571

FOR GENERAL QUESTIONS EMAIL:
MGHFTDUnit@mgh.harvard.edu
www.ftd-boston.org

 MASSACHUSETTS
GENERAL HOSPITAL
FRONTOTEMPORAL
DISORDERS UNIT



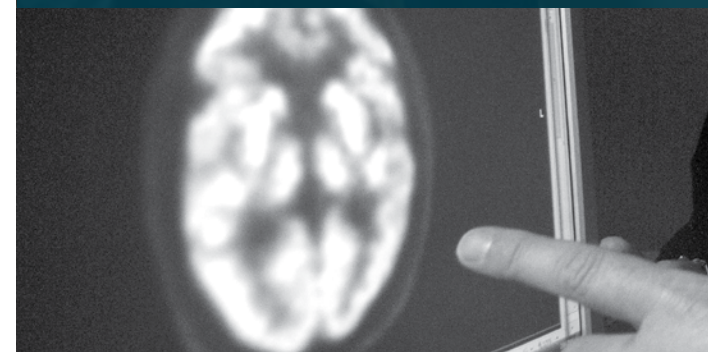
MASSACHUSETTS
GENERAL HOSPITAL

FRONTOTEMPORAL
DISORDERS UNIT



FRONTOTEMPORAL DISORDERS UNIT

CARE FOR TODAY
& HOPE FOR TOMORROW





FRONTOTEMPORAL DISORDERS

Frontotemporal degeneration (FTD) is a progressive neurological disorder that causes damage to the anterior temporal and frontal lobes of the brain. FTD causes a gradual, progressive decline in behavior, language or other abilities and often has a younger age of onset, affecting people in their 50's and 60's, striking at the prime of life.

As the disease progresses, it becomes increasingly difficult for people to plan or organize activities, behave in a socially appropriate way, nurture relationships, or maintain a position at work. All of these challenges result in increasing dependency and a need for caregiving.

“Honestly, this has become my dream job because I get to work with such a great team, and I get to connect with patients and family members that are all unique in their great ways.”

– Megan Quimby,
Speech and Language Pathologist, FTD Unit

When families struggling with FTD have questions about their loved ones' condition and require specialized support from caring medical professionals, the Frontotemporal Disorders Unit at MGH can help.

WHO WE ARE

Our Frontotemporal Disorders (FTD) Unit is a comprehensive clinical-research unit focused on Frontotemporal Degeneration and related disorders, including:

Behavioral Variant FTD

Primary Progressive Aphasia (PPA)

Semantic Dementia (SD)

Corticobasal Degeneration Syndrome (CBD) Progressive Supranuclear Palsy (PSP) Posterior Cortical Atrophy (PCA)

Atypical forms of Alzheimer's

FTD-ALS (amyotrophic lateral sclerosis)

Our team is committed to sophisticated, compassionate, multidisciplinary care of patients with neurodegenerative disorders.

WE PROVIDE SERVICES IN THE AREAS OF:

- Neurology
- Neuropsychology
- Speech Pathology
- Neuro-Ophthalmology
- Psychiatry
- Genetic Counseling & Testing Services
- Physical & Occupational Therapy
- Social Work
- Neuropathology

BUILDING A PARTNERSHIP

FTD Unit clinicians work closely with families to develop treatment plans that include medication, therapeutic services, and an environmental approach to modifying behaviors. Meeting the unique needs of patients and caregivers, these plans can help improve the quality of lives of patients and families and reduce suffering as they navigate the progression of FTD.

“I have hope for FTD because we are bringing all the pieces together that are going to lead to the clinical trials right around the corner that are going to change the trajectory of these illnesses.”

– Dr. Brad Dickerson, Director, FTD Unit

OUR RESEARCH. YOUR STORY.

FTD is a rare disease and there is still a lot to learn about the biology, causes, and treatments that will be helpful. Clinical research is critical to moving forward.

Current research efforts at MGH are aimed at collecting information to better detect, confidently diagnose, and more fully understand the biology of FTD. These efforts are done with the hope that we can learn how to best monitor change over time, predict future symptoms, and develop new treatments.